



NATIONAL LEVEL SCIENCE TALENT SEARCH EXAMINATION

CLASS - 1
Question Paper Code : 10109

KEY

1. C	2. A	3. A	4. D	5. B	6. D	7. A	8. C	9. C	10. A
11. A	12. B	13. A	14. D	15. B	16. A	17. B	18. C	19. B	20. C
21. B	22. A	23. B	24. A	25. A	26. A	27. A	28. B	29. A	30. A
31. B	32. D	33. D	34. A	35. C	36. D	37. B	38. D	39. C	40. B

SOLUTIONS

MATHEMATICS

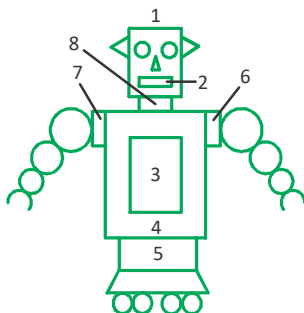
01. (C) $3 > 4$
 $4 = 4$
 $2 < 4$
 $4 < 3$

02. (A) Fifth is the ordinal form of the number 5, indicating position.

03. (A) $1 + 1 = 2$
 $5 + 5 = 1 + 9$

04. (D) $7 - 2 = 5$

05. (B)

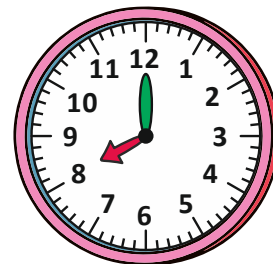


06. (D)



= Rs. 8

07. (A)



08. (C)

Yesterday	Today	Tomorrow
Tuesday	Wednesday	Thursday

09. (C) Apple = 

 = 6 pears

10. (A) Ribbon (A) = 6 units

Ribbon (B) = 5 units

6units – 5units = 1unit

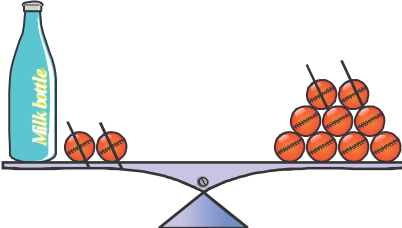
11. (A) 1st → Rupa



2nd → Ekta

3rd → Lata

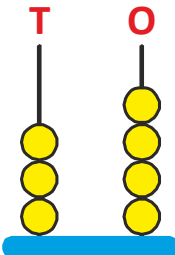
4th → Leena

12. (B) 

13. (A) 

 = 

14. (D) 50, 47, 34, 11 are in Descending order.

15. (B) 

34 = Thirty four

GENERAL SCIENCE

16. (A) Raddish and carrot are root parts of the plant.

17. (B) Lions are big cats. But their babies are called Cubs.

18. (C) Edible oil is obtained from seeds of sunflower.

19. (B) X - Coriander, Y - Hibiscus, Z - Grapevine

20. (C) Option (C) shows windy day.

21. (B) Carrot is the root part of the carrot plant.

22. (A) Lion kills other animals (prey) for its food.

23. (B) Band-aid, dettol and scissors are parts of first aid box.

24. (A) Sun rises in east.

25. (A) Chick is the young one of hen.

26. (A) We use tea leaves of a tea plant to make tea.

27. (A) Fish is the animal that live only in water. There are four fishes.

28. (B) Cattle is used in farms.

29. (A) Our legs and feet help us to walk.

30. (A) Stop, Drop and Roll

31. (B) Fish and ant are living things.

32. (D) We get food grains (cereals) from rice, wheat and maize.

33. (D) Frog can live both on land and in water.

34. (A) A car is a non-living thing.

35. (C) Watermelon has many seeds in it.

36. (D) A thermometer has numbers on it and it shows the temperature of our body. It is formed in a first aid box.

37. (B) The shape of the Moon appears to keep on changing every night.

38. (D) Both sun and stars have their own light.

39. (C) Tarun, Gita, Mohan and Sita are holding flash cards of nose, skin, tongue and eye respectively. Gita is showing the sense organ of skin that will help to differentiate between a glass of hot milk and a glass of cold milk by touching. Sita is showing the sense organ of eye that will help to differentiate between a coloured picture and a black and white picture.

40. (B) Living things grow. Tree is a living thing that grows. The given tree is eight blocks tall.